

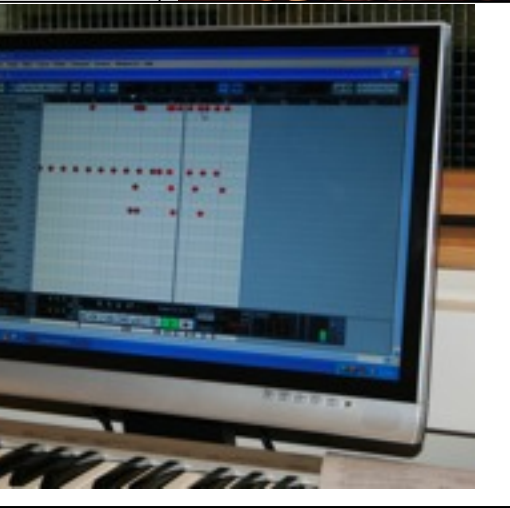
# East Sussex Academy of Music Prospectus for 2011 Entry



## East Sussex Music Service

in partnership with Lewes Sixth Form,  
**Sussex Downs** **College**





# East Sussex Academy of Music

## **A Partnership: East Sussex Music Service and Lewes Sixth Form College, Sussex Downs College.**

All the courses at The East Sussex Academy of Music (ESAM) are operated by East Sussex Music Service in partnership with Lewes Sixth Form College, Sussex Downs College.

Whilst AS/A2 and instrumental/vocal tuition are provided by East Sussex Music Service, all Academy students are formally enrolled as students of Sussex Downs College and are entitled to, and benefit from Lewes Sixth Form College's systems and procedures as with all other students in the college.

### **Courses on offer at ESAM:**

- AS Music
- A2 Music
- AS Music Technology
- A2 Music Technology
- Diploma in Pre Professional Music (awarded by OCN )
- A full range of instrumental and vocal tuition leading to a full range of exams as offered by the Associated Board, Guildhall/Trinity and Rock School

### **Performance Opportunities:**

Performance is highly valued at ESAM and because we have large numbers of highly able students we are able to provide a range of high level performance opportunities catering for a wide cross-section of musical skills and styles. Currently, performance groups include:

- ESAM Choir
- Academy Voices
- ESAM Concert Wind Band
- ESAM Orchestra
- Pre-Professional Ensembles



# East Sussex Academy of Music Exam Results:

A=80%+, B=70%-79%, C=60%-69%, D=50%-59%, E=40%-49%, U=39% & below

## A2 Music Grades 2010 -Total Entries: 30

Grade A*	Grade A	Grade B	Grade C	Grade D	Grade E	Grade U
2	2	7	10	8	1	0
6.66%	6.66%	23.33%	33.33%	26.66%	3.33%	0%
A* - A: 13.33%						
	A*-B: 36.66%					
	A*-C: 70%					
	A-E: 100%					

## A2 Music Grades 2009 -Total Entries: 25

Grade A	Grade B	Grade C	Grade D	Grade E	Grade U
14	7	3	0	1	0
56%	28%	12%	0%	4%	0%
A-B: 84%					
A-C: 96%					
A-E: 100%					

## A2 Music Grades 2008 -Total Entries: 33

Grade A	Grade B	Grade C	Grade D	Grade E	Grade U
7	10	9	5	2	0
21.21%	30.3%	27.27%	15.15%	6.06%	0%
A-B: 51.51%					
A-C: 78.78%					
A-E: 100%					

## AS Music Grades 2010 -Total Entries: 31

Grade A	Grade B	Grade C	Grade D	Grade E	Grade U
6	7	13	5	0	0
19.35%	22.58%	41.93%	16.12%	0%	0%
A-B: 41.93%					
A-C: 83.87%					
A-E: 100%					

## AS Music Grades 2009 -Total Entries: 39

Grade A	Grade B	Grade C	Grade D	Grade E	Grade U
8	10	12	7	2	0
20.5%	25.6%	30.7%	17.9%	5.1%	0%
A-B: 46.1%					
A-C: 76.9%					

A-E: 100%	
-----------	--

**AS Music Grades 2008 -Total Entries: 40**

Grade A	Grade B	Grade C	Grade D	Grade E	Grade U
7	16	12	3	2	0
17.5%	40%	30%	7.5%	5%	0%
A-B: 57.5%					
A-C: 87.5%					
A-E: 100%					

### A2 Music Technology Grades 2010 -Total Entries: 27

Grade A*	Grade A	Grade B	Grade C	Grade D	Grade E	Grade U
0	1	11	7	6	1	0
%	3.70%	40.74%	25.92%	22.22%	3.70%	%
A* - A: 3.70 %						
A*-B: 44.44%						
A*-C: 70.37%						
A-E: 100%						

### A2 Music Technology Grades 2009 -Total Entries: 19

Grade A	Grade B	Grade C	Grade D	Grade E	Grade U
2	5	6	5	1	0
10.5%	26.3%	31.5%	26.3%	5.2%	0%
A-B: 36.8%					
A-C: 68.2%					
A-E: 100%					

### A2 Music Technology Grades 2008 -Total Entries: 32

Grade A	Grade B	Grade C	Grade D	Grade E	Grade U
0	8	12	8	3	1
0%	25%	37.5%	25%	9.37%	3.12%
A-B: 25%					
A-C: 62.5%					
A-E: 96.87%					

### AS Music Technology Grades 2010 -Total Entries: 25

Grade A	Grade B	Grade C	Grade D	Grade E	Grade U
3	3	10	4	5	0
12%	12%	40%	16%	20%	0%
A-B: 24%					
A-C: 64%					
A-E: 100%					

### AS Music Technology Grades 2009 -Total Entries: 32

Grade A	Grade B	Grade C	Grade D	Grade E	Grade U
6	12	8	5	1	0
18.75%	37.5%	25%	15.62%	3.12%	0%
A-B: 56.25%					
A-C: 81.25%					
A-E: 100%					

## AS Music Technology Grades 2008 -Total Entries: 33

Grade A	Grade B	Grade C	Grade D	Grade E	Grade U
4	5	9	8	5	2
12.12%	15.15%	27.27%	24.24%	15.15%	6.06%
<b>A-B: 27.27%</b>					
<b>A-C: 54.54%</b>					
<b>A-E: 93.93%</b>					

## Academy Core Staff Team:

Peter Baker MA, B.Mus (Hons), MTC, AKC, (Lond.)	Head of East Sussex Academy of Music
Nicholas Houghton BA (Hons), FRCO	Lecturer in Music
Pendle Poucher BA (Hons)	Lecturer in Music Technology
Stuart Wagstaff B.Mus (Hons)	Lecturer in Music Technology
John Hancorn GTCL, LTCL	Choral Conductor
Rachel Fryer M.Mus, BA (Hons) PGCE	Academy Accompanist
Beth Mudford	Academy Administrator

<b>Academy Instrumental and Vocal Team:</b>			
<b>Flute:</b>	Christina Clay, Cat Roberts	<b>Piano:</b>	Rachel Fryer
<b>Recorder:</b>	Rivkah Cummerson	<b>Jazz Piano:</b>	Terry Seabrook
<b>Oboe:</b>	Linda Egan	<b>Classical Guitar:</b>	Paul Gregory
<b>Clarinet:</b>	Clare Moisan, Duncan Purvey	<b>Electric Guitar:</b>	John Evans
<b>Bassoon:</b>	Ian Glen	<b>Bass Guitar:</b>	Stuart Wagstaff
<b>Saxophone:</b>	Stuart Longley, Clare Moisan	<b>Voice:</b>	John Hancorn, Lucinda Houghton
<b>French Horn:</b>	Eira Percox	<b>Violin:</b>	Maeve Cooper, Stephen Giles, Sarah Nolan, Lynne Ratcliffe
<b>Trumpet:</b>	Malcolm Warnes, Marcus Plant.	<b>Viola:</b>	Stephen Giles
<b>Trombone:</b>	Jon Penton	<b>Cello:</b>	Joe Giddey
<b>Tuba:</b>	Jon Penton	<b>Double Bass:</b>	James Cruttenden
<b>Kit and Percussion:</b>	Grant Allardyce, Adam Bushell	<b>Harp:</b>	Helen Arnold

**NB:** This is the current instrumental / vocal team membership for 2010-2011, but this may vary from year to year. Whilst we offer the potential of lessons on all the above instruments each year, the reality of what is actually taught depends upon student intake and uptake each year. Lesson on other instruments can usually be made available upon request.

## The Performing Arts Centre:

The superbly appointed Performing Arts Centre is a joint venture between East Sussex Music Service and Sussex Downs College, Lewes. Although the building was officially opened in October 2004, it has been in operation since September 2003. The building houses **The East Sussex Academy of Music**, the offices of **East Sussex Music Service** and the Performing Arts Department of Sussex Downs College, Lewes.

### The Academy accommodation includes:

- A large rehearsal / recital room
- A Music classroom with a class set of computers running Sibelius and Cubase
- A Music Technology Suite including a computer room with a class set of computers running Cubase 4 and two recording studios with digital recording facilities
- 6 instrumental / vocal teaching / practice studios with pianos
- A specialist percussion studio is available for the use of students who study drum kit / percussion with the Academy's specialist teachers



## Academy Course Information:

### AS/A2 Music:

This course is taught by East Sussex Music Service at the East Sussex Academy of Music in partnership with Sussex Downs College, Lewes.

**Duration:** 1 year for AS level and a further year to complete A level

#### Entry requirements:

- The ability to play or sing to grade 5 standard or above
- The ability to read standard staff notation in treble and bass clefs
- A good working knowledge of musical theory. Grade 5 theory is not essential but would be an advantage
- Where GCSE has been offered to a student in a school, it would normally be expected that students should have obtained GCSE Music at grade A\*, A or B. Candidates obtaining grade C will be considered on individual merit. Potential is the deciding force here. Where a candidate has not been provided with the opportunity to take GCSE Music, other qualifications and recommendations will be taken into account
- An audition at which performance of a solo piece is required as well as some other short musical tests, including a theory test

### AS Music (Edexcel)

*NB: The relevant syllabus specifications are downloadable from the Edexcel website: [www.edexcel.com](http://www.edexcel.com)*

This course provides students with the opportunity to develop their skills and their knowledge relating to performing and composing as well as musical history and musical analysis. A broad spectrum of musical styles is studied including both classical and popular styles. Teaching AS/A2 Music through practical involvement is central to the ESAM approach. All AS/A2 students are expected to perform in the various ensembles (Choir, Orchestra and Concert Wind Band) this is used for coursework assessment.

#### Unit 1: Performing:

**30% of total AS marks / 15% of total GCE A level marks**

#### Standard Difficulty Level: Grade 5 Associated Board

- Students are required to perform **one or more pieces of music totalling 5-6 minutes recorded together on a single occasion**
- More than one attempt may be made and the best occasion selected  
Students may perform in any style
- Pieces are awarded extra marks for an increased difficulty level and marks are taken off if the pieces are below Grade 5 standard
- It is better to play a piece of manageable standard well than to attempt a difficult piece and play it less well
- Opportunities to perform solos are provided by 2 evening and 2 class recitals between September and March
- The performances are internally marked and externally moderated

**Lessons:** It is essential that all students on this course are in receipt of instrumental /vocal lessons to prepare them for the performance elements of the course. Preferably this should be with an Academy teacher, as this will ensure an integrated approach to the preparation and assessment of coursework. Please contact the **Academy Administrator** (Beth Mudford) for further details.

## **Unit 2: Composing:**

**30% of total AS marks / 15% of total GCE A level marks**

**15 hours Controlled Conditions**

**+ 1 hour for sleeve notes**

- **One composition** including a detailed score and a recording from the following categories:
  - **Instrumental Music**
    - Composing Expressively -*Exploring moods and emotions in music and the transition from one mood to another*
    - Variation Structures – *Composing idiomatically for instruments exploring variation type structures*
  - **Vocal Music**
    - Words and Music - *Structure in vocal music investigating the relationship between structure in texts and structure in music*
    - Text, Content and Texture – *Exploring different texts for different situations and how textures and styles of singing can be varied*
- **A CD sleeve note** must be submitted outlining how music listen to and studied has influenced the composition off the submitted composition as well as its structure four features of interest from the following list:

*Rhythm, Melodic Development, Texture, Handling of Instruments/Voices, Harmony*

## **Unit 3: Developing Musical Understanding:**

**40% of total AS marks / 20% of total GCE A level marks**

**2 hour Written Exam**

- **Set Works: Examination in 2012 (September 2011 Entry)**
- **Area of Study 1: Instrumental Music**
  - NAM 3 – Berlioz: Harold in Italy: 1<sup>st</sup> Movement
  - NAM 15 – Corelli: Trio Sonata in D, Op.3 No.2, 4<sup>th</sup> Movement
  - NAM 17 – Beethoven: Septet in E flat, Op.20, 1<sup>st</sup> Movement
  - NAM 23 – Schumann: Kinderscenen, Op.15 Nos. 1,3 and 11
- **Area of Study 2: Vocal Music**
  - NAM 31 – Stravinsky: Symphony of Psalms, 3<sup>rd</sup> Movement
  - NAM 34 – Weelkes: Sing we at pleasure
  - NAM 37 – Haydn: My mother bids me bind my hair
  - NAM 52 – Carl Perkins: Honey don't
  - NAM 54 – Beatles: A Day in the Life

**Section A -Listening: 32 marks**

Listening test to include questions on excerpts from the set works relating to the aural analysis of key musical features

**Section B - Investigating Musical Styles: 28 marks**

- Candidates choose to focus on one of the two Areas of Study (see above) and give written answers to questions relating to the comparison and contrasting of musical features from the set works and as well as commenting upon how these features place the work in the social and historical context

**Section C – Understanding Chords and Lines: 20 marks**

- Students are required to analyse harmonic and melodic features from a score of previously unseen music relating to:
  - Keys
  - Chords
  - Cadences
  - Modulations
  - Non-harmonic notes
- Students will also be required to harmonise a short melodic extract in four part harmony as a written test (SATB) in standard staff notation



## **A2 Music (Edexcel)**

### **Unit 4: Extended Performance**

**30% of total A2 marks / 15% of total GCE A level marks**

- **Internally assessed and externally moderated**
- **Standard Difficulty Level: Grade 6 Associated Board**  
Additional credit will be awarded when more difficult pieces are offered

#### **Content summary:**

This unit gives students an opportunity to extend their performance skills as soloists and / or as part of an ensemble. Teachers and students can choose music in any style. Any instrument(s) and/or voice(s) are acceptable. Candidates will perform a 15 minute well balanced recital programme of music played in front of an audience and recorded

Notated and / or improvised performances may be submitted. In the case of improvised performance, an appropriate score must be constructed and sent to the examiner. This could be any of the following:

- Conventionally notated score
- Lead sheet
- Chord chart
- Track sheets
- Tables
- Diagrams

#### **Assessment:**

The music performed is chosen and assessed by the centre and moderated by Edexcel

Marks are awarded for each of the following Criteria:

- Holistic
- Quality of Outcome
- Pitch and Rhythm
- Fluency and Tempo
- Tone and Technique
- Phrasing, Articulation and Dynamics
- The Performance as a Whole – Overall musical impression. Structure and planning of programme

## **Unit 5: Composition and Technical Study**

**30% of total A2 marks / 15% of total GCE A level marks**

- Externally assessed

### **Content summary:**

This unit has two sections: **Composition** and **Technical Study**. The composition section further develops students' composition skills, leading to the creation of a final three minute piece in response to a chosen brief. The technical study section builds on the knowledge and awareness of harmony gained in Unit 3 section C through the medium of pastiche studies.

Academy students must complete two tasks in this unit comprising:

- 1 composition
- 1 technical study (harmony)

### **Assessment:**

In September of each year Edexcel will publish on its website the *Unit 5: Composition and Technical Study* document.

**Section A** contains four composition briefs from which students will select one as the basis for a three-minute composition.

- Topic 1: Development and Contrasts
- Topic 2: Exploiting Instruments
- Topic 3: Music for Film and Television
- Topic 4: Music, Dance and Theatre

**Section B** will contain the opening bars of the technical exercise. Students will complete these openings in a specified style.

- Academy students will be studying Bach Chorales.

Both sections of the examination must be completed under controlled conditions.

- Composition: 14 hours maximum
- Technical Exercise: 3 hours maximum

The composition and technical study will be externally assessed.

## Unit 6: Further Musical Understanding

40% of total A2 marks / 20% of total GCE A level marks

- Externally assessed

### Content summary:

This unit focuses on listening to music, familiar and unfamiliar, and understanding how it works. Set works from the anthology provide the focus for much of the unit. It is recommended that students familiarise themselves with each work as a whole, before concentrating on important musical features, context and/or elements of continuity and change. Between works students should also listen to a wide range of unfamiliar music which relates to the two compulsory areas of study. They should learn how to compare and contrast pairs of excerpts, contextualise music and identify harmonic and tonal features.

### Assessment:

Assessment is through a 2 hour examination paper set and marked by Edexcel.

There are three sections:

- **Section A:** Aural analysis of unfamiliar music
- **Section B:** Music in context – 2 essays on set-works (applied music only) – Relating musical features to social and historical context
- **Section C:** Continuity and change in instrumental music – 1 essay focusing on musical features (e.g. form, texture, tonality, etc) found in the instrumental set-works

- Section A requires students to listen to extract of music played over hi-fi speakers
- A skeleton score is provided for Section A

Each student will have an unmarked copy of the set-works during the examination

**Set Works:** All questions in this unit relate to the study of the following pieces of music .

### Applied Music for Summer Exam 2013:

- NAM 14.: Gabriele – Sonata pian' e forte
- NAM 28. J.S. Bach – Cantata No. 48 "Ich elender Mensch" mts I – IV
- NAM 43. Bernstein – On The Waterfront: Symphonic Suite
- NAM 44. Jerry Goldsmith – Planet of the Apes: The Hunt
- Gong Keybar de Sebutu (Bali) – Baris Melamphan

### Instrumental Music for Summer Exam 2013:

- NAM 5. Debussy – Prélude à l'après-midi d'un faune
- NAM 12. Reich – New York Counterpoint : movement II
- NAM 13 Holborne – Pavane "The image of melancholy" and Galliard "Ecce quam bonum"
- NAM 16. Haydn – String Quartet in Eb, op 33 No. 2, "The Joke": mvt IV
- NAM 18. Brahms – Piano Quintet in F minor, op. 34: mvt III
- NAM 19. Poulenc – Sonata for Horn, Trumpet and Trombone: mvt I
- NAM 50. Miles Davis Quintet - Four

**Progression:**

Most of our students have progressed on to university or college to study music. Music has proved to be a well respected A level qualification enabling many students to gain entry to degree courses in a wide range of subjects in addition to Music, including in recent years Medicine, Law, English, History, Maths and a range of Science subjects. A sizeable number of students have gained places at Music Conservatoires ranging from the Guildhall School of Music and Drama to BIMM.



**Academy students have been very successful at gaining places to music conservatoires and university music faculties in recent years**

## **AS/A2 Music Technology:**

This course is taught by East Sussex Music Service at the East Sussex Academy of Music in partnership with Sussex Downs College, Lewes.

**Duration:** 1 year for AS level and a further year to complete A level

### **Entry requirements:**

- The ability to read traditional staff notation in treble and bass clefs
- The ability to play a musical instrument
- A genuine interest in a broad range of musical styles and idioms
- A basic ability to play one handed on a piano style keyboard whilst reading from musical notation
- GCSE Music is an advantage
- Practical grade exams and Grade 5 Theory are an advantage

All applicants for Music Technology are required to undertake an elementary audition/ interview at which they will be required to:

1. Sequence into the computer a short piece of music (written in treble and bass clefs), one hand at a time
2. Perform a short solo on their main instrument/voice
3. A music theory test
4. Discuss their musical interests and experience

This course allows students to develop musical and technological skills together with knowledge in a range of areas including the use of MIDI based computer programmes for sequencing (Cubase SX) and for score-writing (Sibelius 3). In addition students learn about recording techniques, including microphone placement and mixing. All these skills are also put to use to develop arranging skills at AS, and at A2, composing skills. At A2, there is a special focus on film and TV music.

## **AS Music Technology (Edexcel)**

*NB: The relevant syllabus specifications are downloadable from the Edexcel website: [www.edexcel.com](http://www.edexcel.com)*

### **Unit 1: Music Technology Portfolio 1**

**70% of total AS marks / 35% of total GCE A Level Marks**

**Sequenced Performance: 40 marks**  
**20 Hours Controlled Conditions**

Working from a musical score and from an audio recording of a piece of popular music or jazz provided by the exam board, students have to create a sequenced MIDI version of the music which sounds as musical and as realistically close to the original as possible

**The sequence must be a faithful reproduction of the stimulus score which will be in standard notation. Accuracy is very important but so is musicality and expression. It is therefore important to listen to the original recording regularly.**

### **Important Aspects for Assessment:**

- Pitch & rhythm accuracy

- Accurate & appropriate choice of timbres
- The use of pan & volume controllers to create a musically effective balance and stereo field
- Use of controllers and (or) real time data entry to create musically effective phrasing, articulation, dynamic shaping and tempo control

Evidence that the candidate has engaged with the task musically, demonstrated by a finished product that shows some sense of style and musicality

**Multi-Track Recording: 40 marks**  
**20 Hours Controlled Conditions**

An 8-track recording of a piece of popular music or jazz lasting between 2 – 4 minutes in length. Students will choose from a list of suitable pieces drawn up by the Academy staff. A mixture of microphone and DI techniques can be used, but at least 4 tracks must be captured using a microphone

**Students will be assessed on the following areas:**

- Capture – Use of microphones / DI
- Processing – Use of effects, editing, etc
- Mixing – Balancing and panning the final mix-down into stereo

**Creative Sequenced Arrangement: 40 marks**  
**20 Hours Controlled Conditions**

Working from a choice of 2 pieces provided by the exam board, to create an original arrangement in one of 2 styles stipulated by the exam board. The arrangement should be between 2 and 3 minutes long and show creative development.

The work will be assessed on the following:

- Instrumentation and timbre
- Melody and Rhythm
- Structure, Harmony and Tonality
- Music Technology Skills



## **Unit 2 – Listening and Analysing:**

**30% of total AS marks and 15% of total GCE A level**

### **Listening and Analysing: 80 marks**

- 1 hour 45 minute listening exam with individual CD players and headphones
- Questions are related to extracts of music which require the identification of musical, stylistic and technological features of these extracts
- The focus is on popular music and the development of music technology
- The special focus styles for summer 2012 are:
  - Punk and new wave
  - Club dance

## **A2 Music Technology (Edexcel)**

### **Unit 3: Music Technology Portfolio 2**

Externally assessed

#### **Content summary**

Unit 3 builds on skills acquired in Unit 1, and extends these to include a composition task. It involves detailed study of Area of Study 3: The Development of Technology based Music.

Students must complete three tasks which together make the Music Technology Portfolio 2:

#### **Task 3A: Sequenced Integrated Performance (MIDI plus audio):**

Students are required to produce a sequenced performance of a piece of popular music or jazz music prescribed by the exam board. Students will work from a score and from a recording to produce an accurate musical realisation with the help of music software. The Academy uses Cubase. The students are then required to add a live audio track of the vocal part. They can also add a further two audio tracks if they wish. The recording is to be presented in the form of a stereo mix-down onto CD.

#### **Sequenced Integrated Recording: 40 marks 20 Hours Controlled Conditions**

##### **Task 3B: Multi-track Recording – 12 - 24 tracks**

Students will record a piece of music from a choice of two areas:

- Recording Acoustic / Orchestral Instruments
- Recording Percussion Instruments

The recording needs to be between 3 – 4 minutes in length, and must involve the use of live instruments only. Careful attention should be paid to microphone placement / capture, processing and mixing. It should contain between 12 – 24 tracks, with at least 4 instruments being used. The final recording is to be presented in the form of a stereo mix-down onto CD.

#### **Multi-Track Recording: 40 marks**

## 20 Hours Controlled Conditions

### Task 3C: Composing using Music Technology

Students are to create an original composition (3-4 minutes in length) based upon a brief provided by the exam board (Edexcel). There will be a choice of 3 topics set each year which will include:

- Popular song
- Film / TV music
- Electro-acoustic music (electronic soundscape)

The final recording is to be presented in the form of a stereo mix-down onto CD.

### Composing: 40 marks

#### 20 Hours Controlled Conditions

Students will also submit a logbook which will provide information on the resources used in each of the above tasks.



## Unit 4: Analysing and Producing

Externally assessed  
40% of Total A Level

### Exam Content:

Students will be expected to demonstrate their knowledge of music and the principles of music technology through a series of written commentaries, manipulations and production tasks using material provided on an examination paper and recorded on an audio CD. The examination will test students' musical understanding, their ability to manipulate and correct recorded music and their ability to write commentaries on technological processes. They will also be tested on their ability to produce a balanced stereo mix.

### Assessment:

This assessment will take the form of a 2-hour examination. Each student will have an audio CD, which will contain a series of music files to be imported into music production software. Each student will also have an examination paper in which some or all of the CD tracks will be notated as conventional staff notation, editing grids or numerical data.

### Progression:

This course is particularly relevant for students hoping to work in popular music and the recording Industry or who wish to continue on to higher education. Recent students have gained places on Music Technology or related degree courses at a variety of universities and colleges as well as more specialist institutions ranging from traditional conservatoires to newer institutions such as Brighton Institute of Modern Music.



**Pre-Professional Musical Performance Course:  
NOCN (QCF) Modules for Certificate in Progression - 500/1945/4**

The East Sussex Academy of Music Pre-Professional Course is offered by East Sussex Music Service in partnership with Lewes Sixth Form College, (Sussex Downs College). Students follow a specialised A level Music and performance training course which is appropriate to music college and university entrance.

**Duration: 2 Years**

**Entry to the course:**

There is an audition to gain entry onto the course. Applicants will be asked to:

- Play / sing an own choice solo on one or more instruments / voice
- Learn and perform a quick study solo
- Take an improvisation test
- Sit a listening and Music Theory Test
- Participate in a formal interview

As a rough guide, applicants should be grade 6/7 standard or above on their main instrument/voice (although, because we are looking for potential, we will consider applications from students who are of a lower current grade on their merit). It is not a requirement to play/sing additional instruments or voices, but at audition, the more skills that applicants can demonstrate, the better. However, it is very important to emphasise that the single most important factor we are looking for is POTENTIAL coupled with a real passion for music in all its forms. Auditions are generally held from January until June. Applications are made via Lewes Sixth Form College (Sussex Downs College) clearly marking Pre-Professional Music in addition to AS/A2 Music on the application form. Once the college have passed your application form to us at ESAM, we will send you a specifically music application form and inform you about your audition date. Early application is advised.

**Course Content:**

ALL Pre-Professional Students are entered for the NOCN Certificate in Progression (level 3). The Diploma requirements form the basis of the Wednesday afternoon performance activities and of the Pre-Professional enhancement sessions (1.5 hours per week). Students will be encouraged to learn with an Academy teacher as this enables an integrated approach to the course. An hour long lesson is strongly recommended at this level. Lessons on additional instruments can also be purchased through the Music Service.

The session known as the Pre-Professional Enhancement Session incorporates a mixed programme of ensemble rehearsals interspersed with seminars given by Academy staff. With regard to the ensembles, all Pre-Professional students are allocated to an appropriate group. There will be concerts given by these ensembles during the year.

A specialist team of professional musicians provide a high level of individual tuition and Pre-Professional students are involved in a range of small ensembles ranging from string quartets to jazz ensembles as appropriate. Pre-Professional students also participate in Academy Choir and where appropriate in Concert Wind Band and Orchestra. The course aims to develop students' ability to evaluate their own performances and to develop their knowledge and understanding of repertoire.

The course provides regular opportunities for performances in concerts, both large scale and small scale in venues around East Sussex. The Academy has also become involved in performances and workshops in London, Boston (USA), Rouen and Dieppe (France) and through its links with Glyndebourne and Paris.

### **Module Assessment Structure:**

- Building a Personal Career Portfolio
- Developing Group and Teamwork Communication Skills
- Developing Music Skills for Solo Performance
- Appreciation of the History of Music
- Developing Musical Ensemble Skills
- Understanding Musical Instruments and their Sounds

### **Course Regulations:**

- All Pre-Professional students **must** enrol as A level Music students as well as enrolling for the Pre Professional Course
- All Pre-Professional students are strongly encouraged to study their first study instrument / voice with one of the Academy's team of specialist teachers.
- Pre-Professional students may also take Music Technology, but it must be stressed that this must be in addition to Music AS/A2 and not instead of Music AS/A2. This is because the Pre-Professional programme is essentially about developing musical performance skills.
- Pre-Professional students are expected to take part in the full range of musical ensembles such as Academy Voices, Concert Wind Band and Orchestra on offer as appropriate and at the direction and discretion of the Head of ESAM.  
Membership of ESAM Choir is obligatory

### **Progression:**

In recent years many students have gained places on the most highly rated university degree courses for Music such as Cambridge, King's College London and Nottingham as well as prestigious conservatoires such as the Royal Academy of Music and the Royal College of Music. A rapidly growing number of students interested in popular music have successfully gained places at Brighton Institute of Modern Music and Leeds College of Music.

At the same time, membership of the Pre-Professional course does not pre-suppose a career in music as in the last few years a significant number of students have gained university places to read such diverse subjects as Medicine, History, Bio-Chemistry and Law. This is to be encouraged, as the future of music relies on lifelong excellence in amateur music making, just as much as excellence in the professional musical world and the Pre-Professional course exists to provide students with a choice of opportunities in their musical futures.



## **ESAM Choir: Conductor John Hancorn**

*Time: Every Wednesday afternoon*

*Venue: Room 563 (Hall) Performing Arts Centre*

*Entry Requirements: Interest in music and singing and be able to read music a distinct advantage*

*Places: There is no limit on places*

This is open to all ESAM students as well as all Sussex Downs College students. Members need to be able to read music and previous choral experience is an advantage, but not essential. **All Music students are expected to become members of ESAM Choir as it is integral to their course**, and as they will find choral part singing beneficial to their overall musical development. In addition, performances with the choir are used as A level course work. There is no audition for ESAM Choir.



## **Academy Voices: Directed by John Hancorn**

*Time: Every Wednesday afternoon*

*Venue: Room 563 (Hall) Performing Arts Centre*

*Entry Requirements: A good singing voice and must be able to read music well. Students who study singing will be expected to be members*

*Places: 25 – 30 places*

This is a chamber choir of between 20 – 30 voices. All singing students are expected to participate and those students who do not study singing and who have an interest in singing are very welcome to audition. Students from Sussex Downs College who are not studying Music A level are also most welcome to audition. As with Choir, Music students submit performances as A level coursework.

## **ESAM Concert Wind Band: Conducted by Nicholas Houghton**

*Time: Every Wednesday afternoon*

*Venue: Room 563 (Hall) Performing Arts Centre*

*Entry Requirements: Ability to play (grade 5 or above) instruments such as woodwind, brass and percussion and must be able to read music well*

*Places: There is no limit on places subject to balance considerations*

**All Music Students who play either wind instruments or percussion instruments are expected to join** as this provides essential training and valuable opportunities for coursework accreditation. Performances are used as coursework assessments. Members are auditioned to allocate appropriate parts and seating arrangements. As always, non A level Music students from Sussex Downs College are strongly encouraged to join.

## ESAM Orchestra: Conducted by Peter Baker

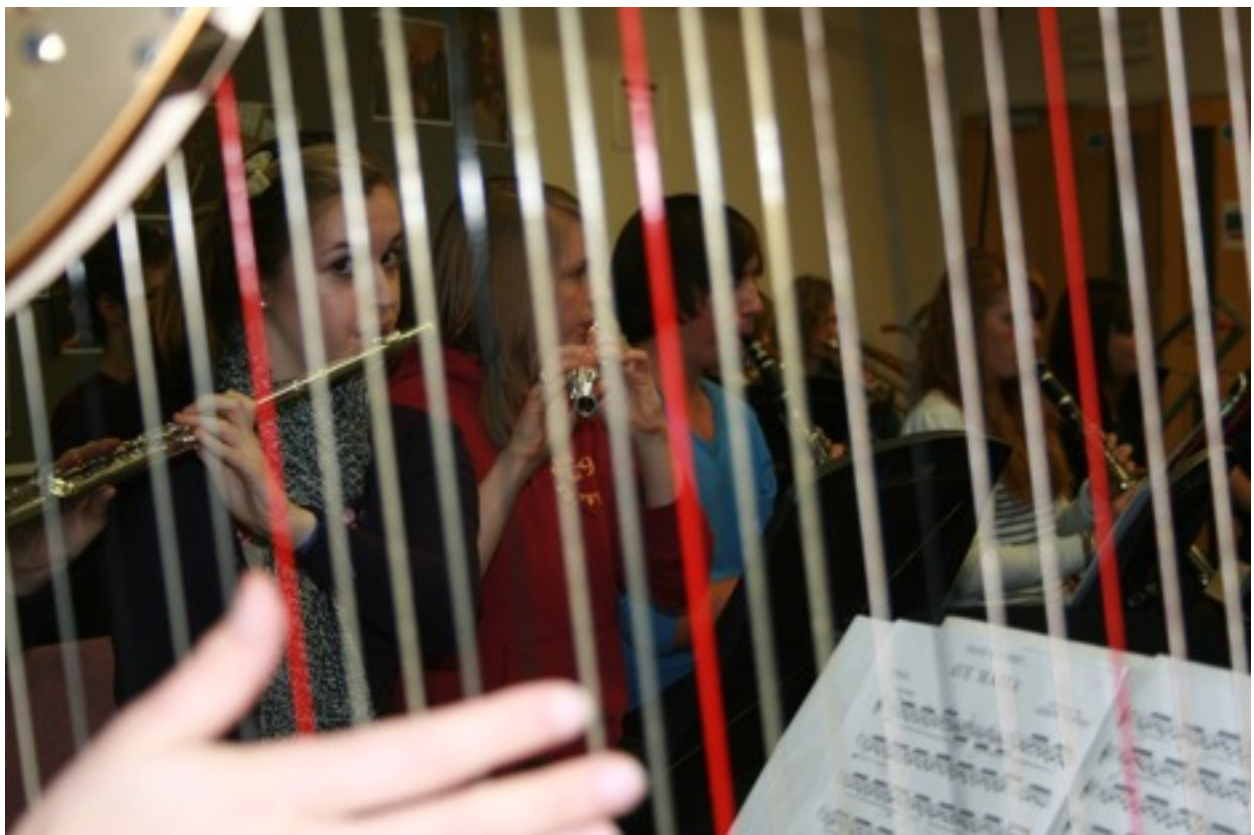
*Time: Every Wednesday afternoon*

*Venue: Room 563 (Hall) Performing Arts Centre*

**Entry Requirements:** Ability to play (grade 5 or above) orchestral instruments of the woodwind, brass, percussion or string families and be able to read music well.

**Places:** There is no limit on string places except that an audition may be required. Usually only 2 – 4 of each wood or brass instruments will be required and with regards percussion 2 or 3 players is the normal maximum. Wind players may be used in rotation to give more players an opportunity to play orchestral music.

**All Music students are expected to audition for the orchestra if they play an orchestral instrument** as performances count as A level coursework. Other students (particularly string players) in Sussex Downs College are very welcome to audition as well. Competition is intense for certain instruments such as woodwind and brass, and in this instance, preference is usually given to Pre-Professional students as membership of the orchestra develops skills and experience which are central to the course.



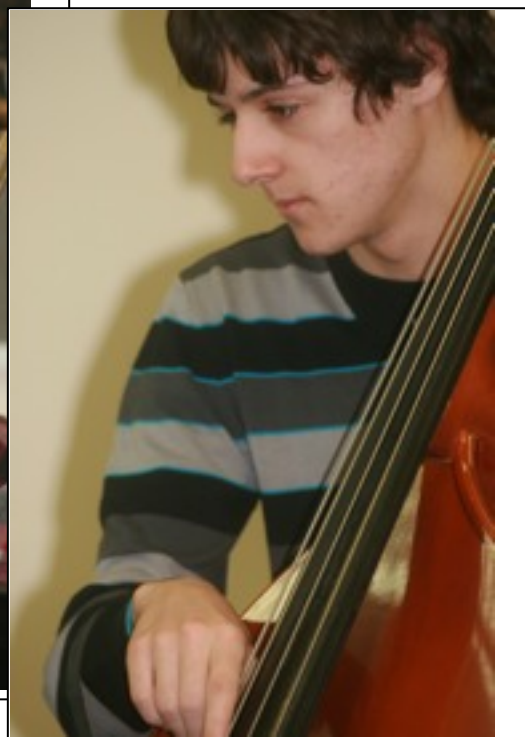
## Instrumental / Vocal Lessons:

These are provided by a specialist team employed by East Sussex Music Service. Teachers have been carefully selected for teaching to the highest level including coaching for college of music auditions. One of the advantages of an in-house team is that communication is much easier than with private teachers enabling us to train our teachers in assessment procedures for AS/A2 Music thus enabling them to become fundamental to the A level teaching process and not a “bolt-on” extra.

Students wishing to apply for lessons need to fill in an appropriate application form available from the Academy Administrator, Beth Mudford.

Individual specialist lessons are offered in most instruments / voices. Lessons can be 30 minutes, 45 minutes or 1 hour in length. The following are currently offered by specialist teachers; although tuition in additional instruments can be arranged as required:

<i>Flute</i>	<i>Trombone</i>	<i>Electric Guitar</i>
<i>Recorder</i>	<i>Tuba</i>	<i>Bass Guitar</i>
<i>Oboe</i>	<i>Orchestral Percussion</i>	<i>Voice</i>
<i>Clarinet</i>	<i>Drum Kit</i>	<i>Violin</i>
<i>Bassoon</i>	<i>Keyboard</i>	<i>Viola</i>
<i>Saxophone</i>	<i>Piano</i>	<i>'Cello</i>
<i>French Horn</i>	<i>Jazz Piano</i>	<i>Double Bass</i>
<i>Trumpet</i>	<i>Classical Guitar</i>	<i>Harp</i>



## Academy Staff

**Peter Baker** is Head of The East Sussex Academy of Music. Peter gained a choral scholarship to King's College London where he read Music and later gained a Masters degree from the University of London Institute of Education. Peter has been Director of Music in a number of schools and colleges, most recently one of the first Arts College Status schools in the country. Peter has also been involved as a trainer of teachers, both as Teacher Consultant for Music in West Berkshire and as a trainer and presenter for music and music technology teachers for a national INSET provider. Alongside his work in education, Peter has worked as a professional singer, singing for five years in Canterbury Cathedral Choir as well as ad hoc solo oratorio work and consort appearances with groups such as the Gabrieli Consort.

**Nicholas Houghton** (Lecturer in Music) was a chorister at Coventry Cathedral before going on to study music at Bristol University and teaching at Magdalene College, Cambridge. He is an organist, pianist and works both as a choral conductor and professional continuo player and accompanist. He has recently become an A level examiner. Before coming to the East Sussex Academy, he was Director of Music at Hurstpierpoint College in West Sussex.

**Pendle Poucher** is Music Technology tutor at ESAM and is a working TV composer, recording artiste and sound artist with considerable experience in the music industry. His music credits include commissions for Sony Playstation, BBC TV, Channel 4, etc, soundtracks for theatre and short film and record releases on major labels.

**Stuart Wagstaff** gained his degree in Popular Music Performance at the London College of Music. He is a lecturer in Music Technology and directs Rock Shop. Stuart has been playing rock and pop bass for about 20 years in various bands. In his spare time he likes to ride motorbikes and play in his studio!

**John Hancorn**, ESAM's choral conductor, studied at Trinity College of Music and has a well established career as a professional singer, having extensive experience performing and recording in the field of oratorio, opera and consort singing. He has sung principal roles with Royal Opera House Covent Garden, Glyndebourne, and Welsh National Opera, but he is also experienced as a consort singer. In addition, John is a very active locally as Music Director of the East Sussex Bach Choir and Sussex Baroque Players.

**Rachel Fryer**, Academy accompanist, is active both as a soloist and accompanist, having given recitals for many music societies in national venues and on Greek National Radio and Television. Rachel has performed on international cruise ships both as a soloist and as an accompanist. She has also performed extensively for the late Sir Yehudi Menuhin's "Live Music Now!" organisation, bringing music into the community. Rachel has worked as a tutor and coach on the National Young Pianists' Course, for the National Youth Orchestra, at Kharkov Special Music School, and on many summer music courses. In 2001, Rachel worked on the innovative Royal College of Music Higher Education Summer School where she coached and led seminars.

## **Contacting ESAM:**

### **Postal Address:**

*East Sussex Academy of Music  
East Sussex Music Service  
Performing Arts Centre  
Mountfield Road  
Lewes  
East Sussex  
BN7 2XH*

*Tel: 01273 – 336793*

*Fax: 01273 – 336778*

### **Email:**

[Beth.Mudford@eastsussex.gov.uk](mailto:Beth.Mudford@eastsussex.gov.uk)

**Academy Administrator:** Beth Mudford

**Head of East Sussex Academy of Music:** Peter Baker

**Director of East Sussex Music Service:** Dr Tony Biggin

### **How to find ESAM:**

Please see map overleaf







How to find us



**SUSSEX DOWNS  
COLLEGE**  
*Putting Students First*

Mountfield Road, Lewes, East Sussex, BN7 2XH  
Tel 01273 483188 Fax 01273 478561

